

Ultra MixMaster

ABOUT THE ULTRA MIXMASTER

The Ultra MixMaster is a very powerful self-pumping ultra-mixer:

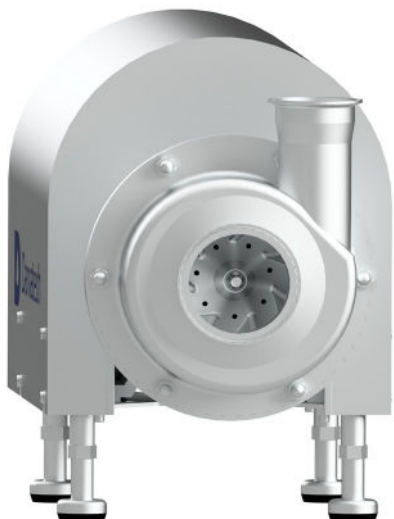
- Extreme shear rate up to 120,000 s⁻¹
- Homogenising effect equivalent to 50-80 bar
- Low CAPEX/OPEX compared to homogenising effect
- Low service cost
- Designed according to EHEDG
- Step-file available on inquiry

Specifications

The Ultra MixMaster is developed for products with low to medium viscosities.

The mixer works according to the rotor-stator principle, where a special closed mixing wheel passes the product through the patented stator.

For some applications the Ultra MixMaster can replace a low-pressure homogeniser. The Ultra MixMaster has a homogenising effect equivalent to 50-80 bar.



The Ultra MixMaster can create homogenisation down to 1µ lump free.

The mixer unit is very versatile and can be used for many different homogenisation and dispersion purposes. For low to medium viscosity the mixer performs the out-pumping action itself.

For high-viscose applications (>500cP) the setup requires positive feeding. For other application possibilities, please

Applications

The Ultra MixMaster can operate with different products and in different setups:

- **Batch operation** - the ultra-mixer is placed as a outlet pump and gives the product an extra boost.
- **Inline setup** - the mixer is placed between the process vessels and operates in single pass. for some applications the mixer works as a light homogenizer.
- **Emulsification, reduction of droplet size and shear of slurries, concentrates and pigments**

Equipment

STANDARD EQUIPMENT

Mixer unit (WEG) (230/400V 50Hz) with shaft sealing (to be frequency controlled)

Tri-clamp inlet/outlet

Motor cover

Frame with four legs

OPTIONAL EQUIPMENT

Double mechanical shaft seal with solenoid valve and throttle valve

Bypass loop for extra circulation over mixer

Fitting SMS DIN/ISO. Other on request

Other motors, Nema exx & etc. on request.

Manual regulating seat valve to adjust outlet flow (unique SSV Ø51)

Start/stop box with soft starter

Start/stop box with frequency inverter

Technical data

Model	Motor	Flow	Shear rate	Inlet pressure
Ultra MixMaster 40 - 250 - 18.5	18.5 kW	10-40 (5 bar) m ³ /h	Up to 120,000 s ⁻¹	0.5 - 5 bar
Ultra MixMaster 40 - 250 - 22	22 kW	10-50 (5 bar) m ³ /h	Up to 120,000 s ⁻¹	0.5 - 5 bar

Model	Outlet pressure	Service water*	Weight	Dimensions (H x W x D)
Ultra MixMaster 40 - 250 - 18.5	2.5 - 7 bar	20 l/h	210 kg	908 x 460 x 930 mm
Ultra MixMaster 40 - 250 - 22	2.5 - 7 bar	20 l/h	225 kg	908 x 680 x 1150 mm