

MixMaster

ABOUT THE MIXMASTER

The MixMaster is the most energy-efficient and flexible self-pumping mixer on the market:

- Low energy/high efficiency
- Strong shear rate
- Low service cost
- Designed according to EHEDG
- Step-file available on inquiry



Specifications

The MixMaster is developed for products with low to medium viscosities.

The MixMaster is the most energy-efficient solution for inline high-shear mixing on the market.

The mixer works according to the rotor-stator principle, where a special closed mixing wheel passes the product through the patented stator.

The mixer unit is very versatile and can be used for different

homogenising and dispersion purposes. For low to medium viscosities, the mixer performs the out-pumping action itself.

- **Batch operation** - the mixer is placed in a circulation loop over a process vessel
- **Inline setup** - the mixer is placed between two process vessels and operates in single pass. For some applications the mixer works as a light homogenizer

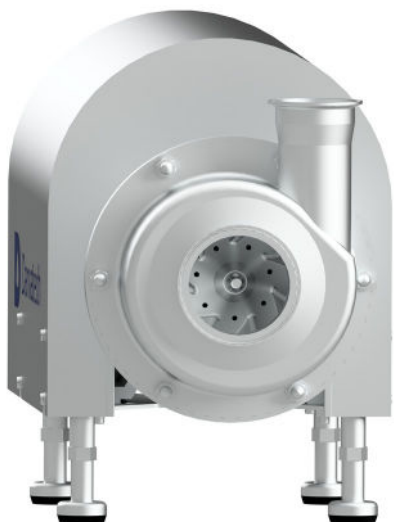
For high-viscose applications (>500cP) the setup requires positive feeding.

Applications

The MixMaster is used for mixing of powders and liquids e.g.:

- Emulsion
- Slurries
- Concentrates (liquid/liquid)
- Smoothing & viscosity reduction of yoghurt
- Fish-eye removal in soft drinks/stabiliser solutions
- Blending applications

Homogenisation down to 2µ lump-free.



Equipment

STANDARD EQUIPMENT

Mixer unit (WEG) (230/400V 50Hz) with shaft sealing (to be frequency controlled)

Tri-clamp inlet/outlet

Motor cover

Frame with four legs

OPTIONAL EQUIPMENT

Double mechanical shaft seal with solenoid valve and throttle valve

Bypass loop for extra circulation over mixer

Fitting SMS DIN/ISO. Other on request

Other motors, Nema exx & etc. on request.

Injector for powder intake with 100 litre funnel (see InjectMaster data sheet)

Start/stop box with soft starter

Start/stop box with frequency inverter

Technical data

Model	Motor	Flow	Mixer capacity	Inlet pressure
MixMaster 32 - 160	5.5 kW	25 (2 bar) m ³ /h	5 m ³ /h	0.5 - 5 bar
MixMaster 50-160	7.5 kW	30 (2 bar) m ³ /h	7.5 m ³ /h	0.5 - 5 bar
MixMaster 80-160	11 kW	40 (2 bar) m ³ /h	10 m ³ /h	0.5 - 5 bar
MixMaster 100-200	30 kW	90 (4 bar) m ³ /h	25 m ³ /h	0.5 - 5 bar
MixMaster 100-200	45 kW	125 (4 bar) m ³ /h	30 m ³ /h	0.5 - 5 bar

Model	Outlet pressure	Service water*	Weight	Dimensions (H x W x D)
MixMaster 32 - 160	2.5 - 7 bar	20 L/h	75 kg	650 x 420 x 930 mm
MixMaster 50-160	2.5 - 7 bar	20 L/h	75 kg	500 x 420 x 930 mm
MixMaster 80-160	2.5 - 7 bar	20 L/h	80 kg	650 x 420 x 930 mm
MixMaster 100-200	2.5 - 8 bar	20 L/h	110 kg	908 x 460 x 930 mm
MixMaster 100-200	2.5 - 8 bar	20 L/h	150 kg	908 x 680 x 1150 mm

*When flushed, mechanical seal is selected