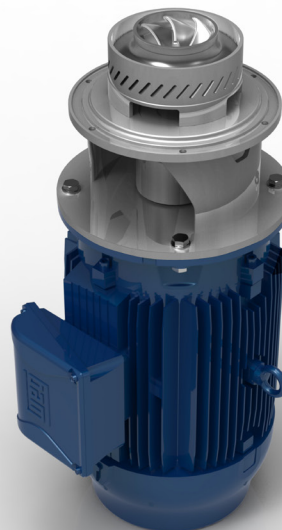


ShearMaster

The **ShearMaster** is the most efficient and flexible mixer on the market:

- Low energy consumption/high efficiency
- High shear rate
- High mixing rate
- Fast and easy installation
- Low service cost - few wear parts
- Hygienic design in compliance with EHEDG
- Step-file available on inquiry

The **ShearMaster** is developed for products with low to medium viscosities.



APPLICATIONS

The **ShearMaster** represents the next generation of mixing solutions for the process industry.

Not only is it more compact and perfectly optimised for energy-efficient high shear mixing, it is also virtually maintenance-free.

The mixer unit is designed to be welded into existing or new tanks, where better and more efficient mixing is needed. The ShearMaster is welded into the bottom or tank side. It is also possible to install more units into the silo tanks. Powder and liquid can be added manually through the manhole or automatically, by for example a screw conveyor through the tank top, and the powder is instantly incorporated into the liquid. The mixer generates a controlled vortex in the tank, which contributes to separating air from the liquid and generates a perfect homogenous dispersion within seconds.

The result is a highly stable and homogenous end product, which is lump-free and contains a minimum of air.

Depending on the selected options, the mixer can be used as a batch and an inline.

APPLICATIONS:

The **ShearMaster** has been optimised for mixing of a wide range of products, e.g.:

- Products for spray drying
- Soft drinks
- Ice cream
- Sugar solutions
- Pectin solutions
- Syrup
- Slurries
- Soups
- Petfood Gravy
- Recombined milk-based products

Depending on type of viscosity (Shear sensitive e.g. Ketchup) products with up to 5000 cP can be processed.



SHEARMASTER

EQUIPMENT

STANDARD EQUIPMENT:

Mixer unit (WEG) (230/400V 50Hz) with shaft sealing (to be frequency controlled)
--

Welding Flange

O-Ring EPDM

Shaft seal carbon/SIC bellow

STANDARD ON SHEARMASTER 80-160:

*Double mechanical shaft seal with Bürkert (1/8") solenoid valve and throttle valve

OPTIONS

Other motors, Nema exx & etc on request.
--

Propeller for extra turbulence

Start/stop Box with soft starter

Start/stop Box with frequency inverter
--

Shaft seal SIC/SIC

Sterile balance shaft seal Carbon/SIC

Sterile balance shaft seal SIC/SIC

TECHNICAL DATA

Model:	Motor	Flow	Shear Rate	Recommended Tank Size
ShearMaster 65-125	5,5 kW	50 - 70 m ³	18-35000 s ⁻¹	50 - 100 l
ShearMaster 65-125	7,5 kW	60 - 80 m ³	18-35000 s ⁻¹	75 - 150 l
ShearMaster 80-160	11 kW	80 - 120 m ³	25-50000 s ⁻¹	200 - 400 l
ShearMaster 80-160	15 kW	100-130 m ³	25-50000 s ⁻¹	300 - 600 l

Model:	Flange Diameter	Service Water*	Weight	Dimensions (L x D)
ShearMaster 65-125	220 mm	N/X	65 kg	550 x 225 mm
ShearMaster 65-125	220 mm	N/A	67 kg	600 x 240 mm
ShearMaster 80-160*	310 mm	20 l/h	100 kg	660 x 260 mm
ShearMaster 80-160*	310 mm	20 l/h	110 kg	700 x 280 mm